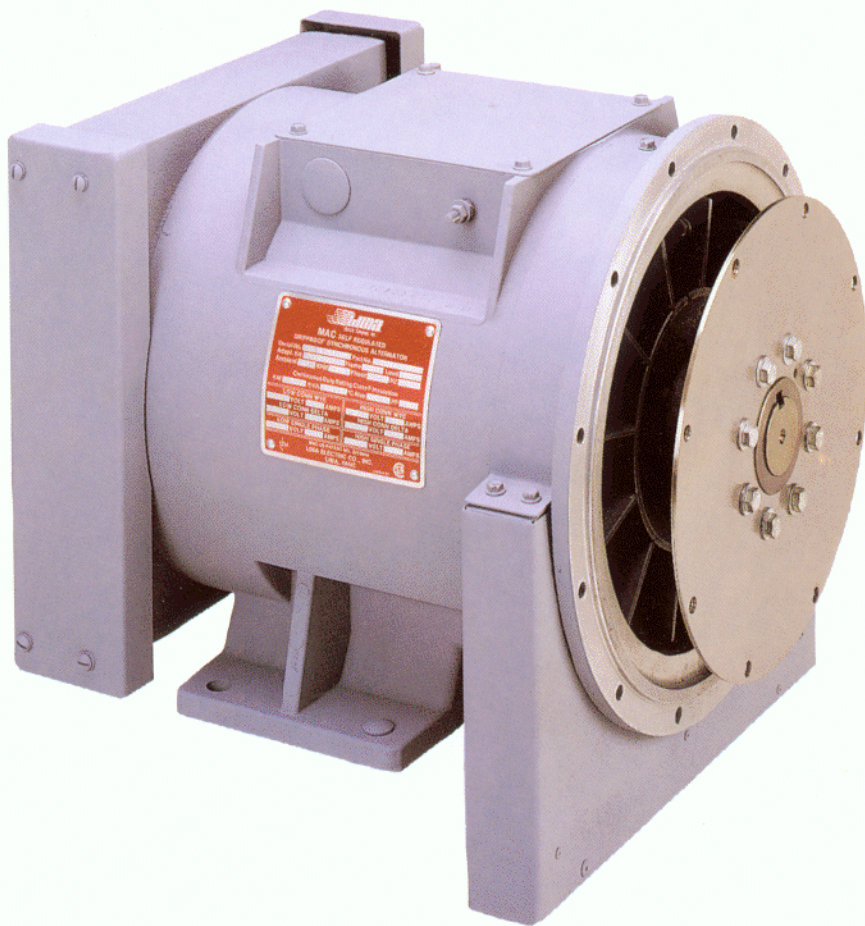


**THE MARATHON®  
REEFER GENERATOR**

# Marathon Electric Introduces The All New... "Marathon Reefer" Generator



**ISO 9002  
CERTIFIED**

**MARATHON  
ELECTRIC**  
A Subsidiary of Regal-Beloit Corporation

**RUNS.  
AND RUNS.  
AND RUNS.  
AND RUNS**



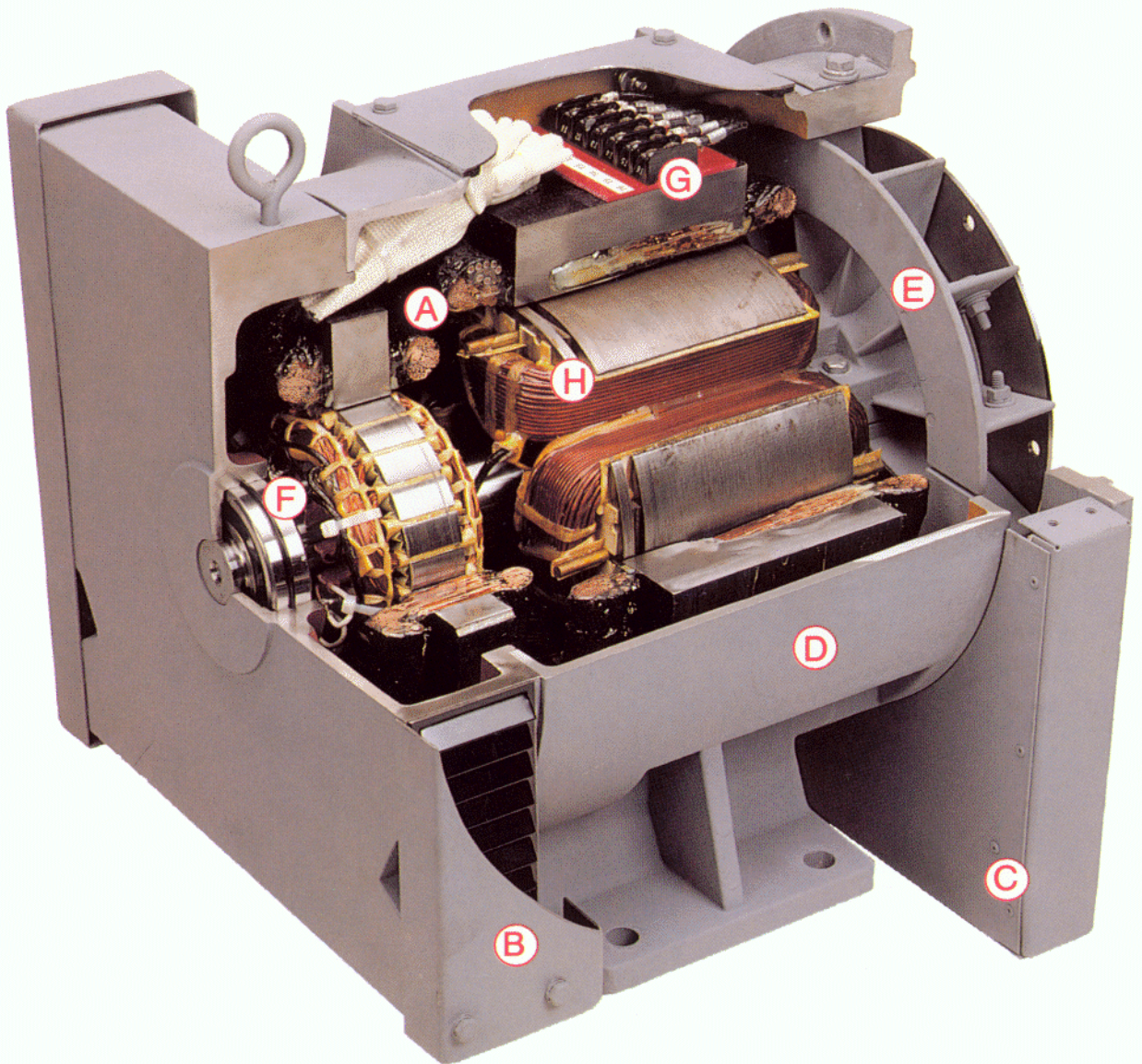


# Examine these exclusive **MARATHON**

The all new **MARATHON REEFER GENERATOR** has been specifically designed to meet the unique requirements of the reefer application. Using the LIMA® MAC electrical design as a base, Marathon has greatly enhanced the product to address the environmental demands of the underslung and nose mounted genset, while maintaining the convenient ease of use features of the self-regulated LIMA® MAC design.

A 100% Solids varnish/Polybutadiene overcoat insulation system provides the ultimate protection for the generator windings. Marathon Electric also offers an intake and exhaust baffle to prevent contaminants from entering the generator.

With a comprehensive understanding of the application, Marathon Electric is proud to present the **MARATHON REEFER GENERATOR**.





# **MARATHON REEFER** Generator Features:

## **MARATHON REEFER FEATURES:**

**A. SUPERIOR INSULATION SYSTEM.** Incorporates a combination of 100% Solids varnish with a Polybutadiene overcoat, resulting in a complete encapsulation of the windings. In addition to the excellent environmental protection against moisture, salt, and chemicals of the reefer application, the 100% Solids/Polybutadiene combination is far superior to other methods in flexibility, toughness, abrasion resistance, thermal shock properties and elevated temperature insulation resistance. Special winding procedures include cuffed slot liners to provide positive spacing and increased trackover resistance. Connections are insulated with tape and absorbent felts for additional protection. Extra endturn ties provide additional strength.

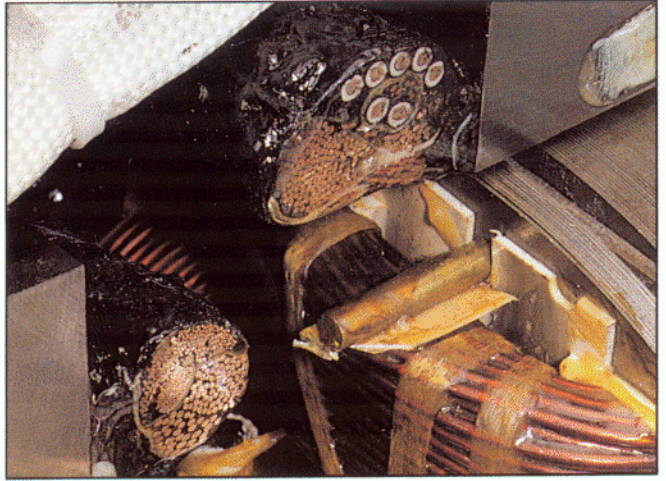
**B. SIDE AIR INLET FILTRATION DESIGN.** Incorporates air baffles to provide a change in air direction to reduce moisture and contamination.

**C. OPTIONAL EXHAUST BAFFLE.** Recommended on underslung generators which may have a return leg in which the generator is not running. In that mode the baffles in the exhaust baffle provide a change in direction to reduce moisture and contamination from entering the generator.

**D. CAST ALUMINUM FRAME CONSTRUCTION.** Provides for a lightweight design in addition to maintaining the rigid construction required to withstand roadway shock and vibration.

**E. CAST ALUMINUM ALLOY VENTILATION FAN.** Prevents vibration and breakage problems associated with sheet metal or plastic fans.

**F. HEAVY DUTY DOUBLE-SEALED BALL BEARINGS.** The oversized 6308 ball bearing insures a long life (100,000 hours B-10 life) while the double-sealed design fully protects the bearing from contamination. In addition an integral anti-rotation O-ring is included to prevent bearing or bracket housing wear.



100% Solids/Polybutadiene Overcoat

**G. TERMINAL STRIP.** Located in the top access conduit box provides ease of wiring or reconnection without taped connections. A grounding stud is provided inside and outside the conduit box.

**H. FIELD WINDING PROTECTION.** Layer wound with thermo setting epoxy to provide protection against contamination and for high mechanical and electrical integrity.

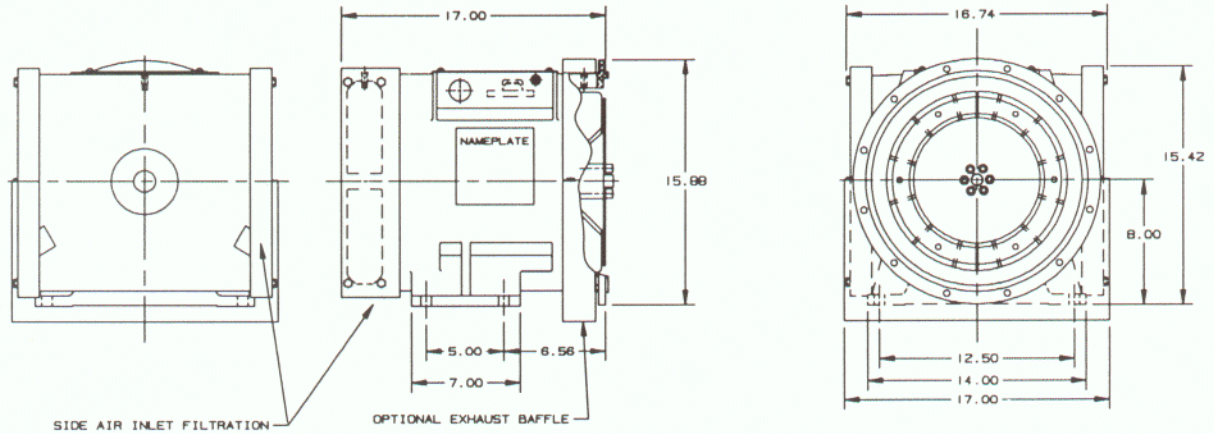
**I. EXCLUSIVE LIMA<sup>®</sup> MAC PERFORMANCE.** Provides excellent motor starting capabilities to withstand the heavy compressor starting loads of the reefer application (1.2 HP/kW motor starting). The simple self-regulated design has inherent voltage regulation and positive voltage build-up.

**J. COMPACT LENGTH AND HEIGHT.** Essential to the space restrictions of the Reefer generator. The Marathon design includes a compact 17" overall length and a low profile terminal opening.

**For a dependable source of high power performance, specify the **MARATHON REEFER GENERATOR**. It could only be from **Marathon Electric**.**



# MARATHON REEFER GENERATOR



## SPECIFICATIONS

Length	Compact 17" overall length.
Insulation System	100% solids varnish.
	Polybutadiene overcoat.
Air Filtration System	Side inlet air filtration baffle.
	Optional exhaust baffle.
Construction	Cast aluminum frame.
	Cast-iron bearing carrier.
Bearings & Lubrication	Double-sealed 6308 ball bearing.
	100,000 hours B-10 life.
	Integral anti-rotation O-ring.
	Chevron SRI #2 grease.
Rectifier Assembly	Rectifier assembly is serviceable through bearing carrier without disassembly of the rotor from the generator.
Adaption	SAE no.4 or SAE no. 5.
	"G" dimension 0.00" to 2.12".
	Special configurations also available.
Terminal Strip	Located at 12:00.
	10 Lead machine with easy customer reconnection.
	Ground stud internal and external to conduit box.
	Low profile conduit box.
Electrical	At 60 Hz: 15 kW, 240Y/480Y volt, 0.8 power factor.
	At 50 Hz: 12 kW, 190Y/380Y volt, 0.8 power factor.
	1.2 Horsepower/kW motor starting, code G.
	Self regulated LIMA® MAC design.
	500 percent short circuit excitation support.
Ventilation	Cast aluminum fan.
Agency Listings	CSA certified.

Marathon Electric Mfg. Corp.  
 100 E. Randolph Street  
 P.O. Box 8003  
 Wausau, WI, USA 54402-8003  
 Phone: (715) 675-3359  
 Fax: (715) 675-8026

SB509 Reprint 8/2000

**MARATHON**  
**ELECTRIC**

A Subsidiary of Pagar-Belot Corporation

**RUNS.  
 AND RUNS.  
 AND RUNS.  
 AND RUNS.**

