

POWERDISTRIBUTION

PDM II SLIM SERIES

PDM II SLIM – REDUCED FOOTPRINT POWER DISTRIBUTION MODULE

Today's datacenters are struggling to add servers to meet the ever-increasing demand for computer services. Not all installations have the luxury of a sprawling computer room for expansion. Small data centers are bounded by the available floor space and must make the best of use of every square foot. Cyberex's new Slim PDM blends the isolation transformer and panel board distribution into the middle or end-of-the-rack line-up saving valuable space normally taken by over-sized PDU cabinets. The mid-sized transformer in the PDM Slim is tuned to the rack form factor to maximize power density while offering all the same features found in a full-sized PDM.

NEW
SLIM
SERIES



BIG MISSION CRITICAL FEATURES IN A SMALL PACKAGE

- **(2) 42 circuit panel boards** placed conveniently within your rack line-ups
- **Top or bottom entry/exit** provides flexible installation options
- **Branch Circuit Management** provides detailed status of individual circuits and early warning of overloads
- **Advanced Communications** allows remote monitoring of circuits by the BMS
- **Local Display** can be used as an Ethernet gateway to concentrate branch circuit data from up to 15 other Slim PDMs



STANDARD PRODUCT SPECIFICATIONS

Electrical

kVA	50, 75, 100, 125 kVA
Input	480 or 600 VAC, 60 Hz, 3 phase, 3 wire + ground
Output	208/120 VAC, 3 phase, 4 wire + ground

Transformer

Type	Copper, delta-wye, dual shield, Class 220, 200% neutral, 60 Hz
K-rating	K-20 (std.), K-13 (opt.)
Temperature Rise	150°C (std.), 115°C (opt.)
Taps	(4) 2.5% FCBN, (2) 2.5% FCAN

Distribution

Panel Boards	(2) Square-D or GE standard 42 circuit
--------------	--

Operating Conditions

Temperature	0 to 40°C (operating), -40 to 60°C (storage)
Audible Noise	55 dBA (maximum)
Altitude	8,200 ft (2,500 m) maximum

Dimensions

Height	77" (195.6 cm)
Depth	38" (96.5 cm)
Width	24" (61.0 cm)

General

Convection Cooled
Hinged Dead-Front Panels
Casters and Leveling Feet
Top/Bottom Entry/Exit
Hi-Res LCD Display with Ethernet

Options

Branch Circuit Management
TVSS

Standards

ETL Listed to UL 60950 and UL 891
NEMA (All Applicable Standards)
FCC Part 15 Compliant

* other configurations available as non-standard

STANDARD MONITORING SPECIFICATIONS

Power Monitoring

Input Voltage Line to Line (True RMS)	S
Output Voltage Line to Line (True RMS)	S
Output Voltage Line to Neutral (True RMS)	S
Output Current (True RMS)	S
Neutral Current (True RMS)	S
Ground Current (True RMS)	S
kVA	S
kW	S
Frequency	S
Percent Load Per Phase	S
kWh Consumption	S
Power Factor Per Phase	S
Peak Demand	S (UC)
Total Harmonic Distortion (Voltage and Current)	S
Load Crest Factor	S
Load Power Factor	S
Percent of Full Load	S

Control

Emergency Power Off (EPO) Pushbutton	S
Remote EPO Pushbutton Compatible	S
4 Form C Output Alarm Contacts	S
4 Form C Input Contacts - User Configurable	S

Power Alarms

High Transformer Temperature	S
Shutdown-Transformer Temperature	S
High/Low Input Voltage	S (UC)
High Output Current	S (UC)

Annunciation

Horn	S
Acknowledge Pushbutton	S

Communications

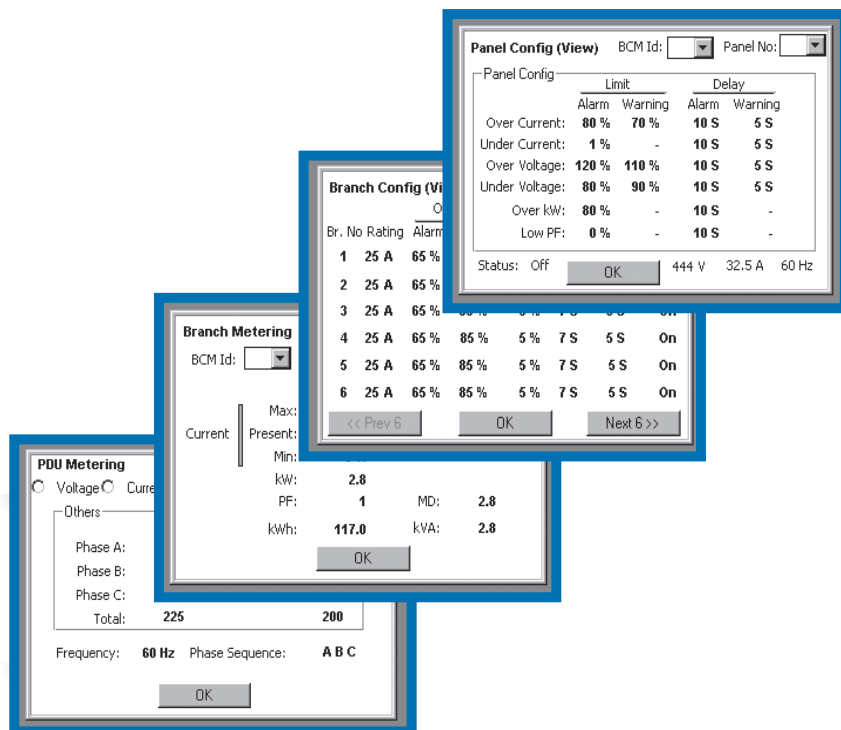
Modbus RTU (RS-485)	S
Modbus TCP (Ethernet)	S
Web Server	
SNMP Summary Alarm Traps	

S = Standard
(UC) = User Configurable

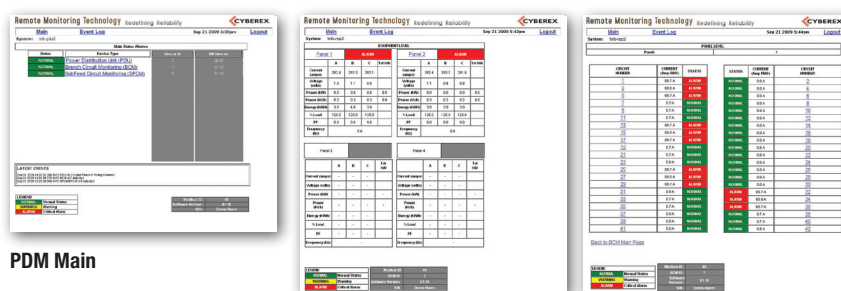
POWER & SYSTEM MONITORING

The PDM Slim features all the same powerful power and circuit monitoring and communications capability as our full-size PDM including Branch Circuit Management, Web Server and SNMP Alarm Traps.

Local Display



Web Server



PDM Main

BCM Panel Overview

BCM Panel Individual



Thomas & Betts Power Solutions

5900 Eastport Blvd. • Richmond, VA U.S.A. 23231-4453 USA

Tel: (804) 236-3300 • Toll free: (800) 238-5000 • Fax: (804) 236-4841

© 2010, Thomas & Betts Power Solutions, LLC. Cyberex is a registered trademark of Thomas & Betts Corporation. Specifications are subject to change without notice. Visit our website for latest revisions.

For more information go to www.cyberex.com