



LEGACY 202-1100 SPARK ARRESTING

Industrial Grade - 3 to 5 dB(A)



APPLICATION

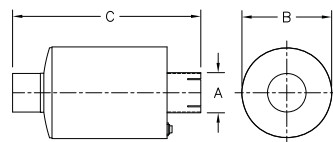
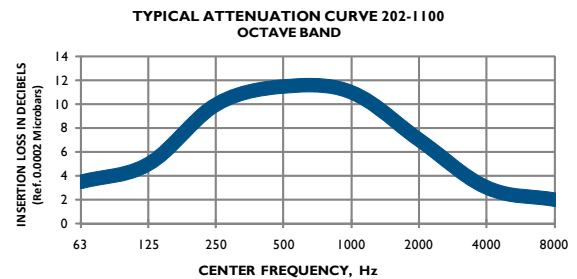
A highly efficient spark arrestor that utilizes centrifugal force to separate the solids from the exhaust gas. Ideal for both stationary and mobile applications. Models 1.5" through 6" have been tested by the U.S. Forestry Service and have an efficiency rating of 95% or greater.

CONSTRUCTION

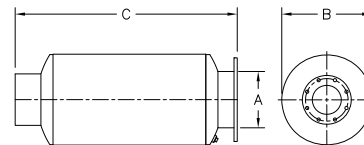
Features all welded heavy-gauge construction. Shell and heads are aluminized steel with stainless steel internal critical parts. Additional connections available. Call factory for details.

FINISH AND OPTIONAL MATERIALS

High heat black paint on sizes 1.5" - 6", high heat powder coat on sizes 8" - 14", and high heat black paint on sizes 16" and larger. Silencers available in stainless steel, or with aluminized heads and shell - call factory for details.



C FF D ST L



FLANG D ST L

Part Number	A Inlet Size	B Diameter	C OAL
202-11015	1.5	6	9.5
202-1102	2	6	11.1
202-11025	2.5	6.3	13
202-1103	3	7	14.6
202-11035	3.5	7	16.5
202-1104	4	8	18.1
202-1105	5	9	20.8
202-1106	6	10	23.5
202-1108	8	14	35.5
202-1110	10	16	41.5
202-1112	12	18	48
202-1114	14	20	54
202-1116	16	22	60
202-1118	18	24	66
202-1120	20	26	72
202-1122	22	28	78
202-1124	24	30	84

All spatial dimensions are in inches.

Additional connections available.

All weights are in pounds. All weights are approximate.

Use diameter to find bracket sizes. Example: 202-1108 (14" dia) would require 28-1400 brackets (or similar 29 brackets).

PRICES

For further information on quotes, please contact GT Exhaust

quotes@gtexhaust.com

1.888.894.3726

Ref.# SSB 06-01-2011-01